

PART OF S.W. 1/4 OF SEC. 24, T.5N., R.1W., S.L.B. & M.  
**EASTWOOD SUBDIVISION NO. 6**

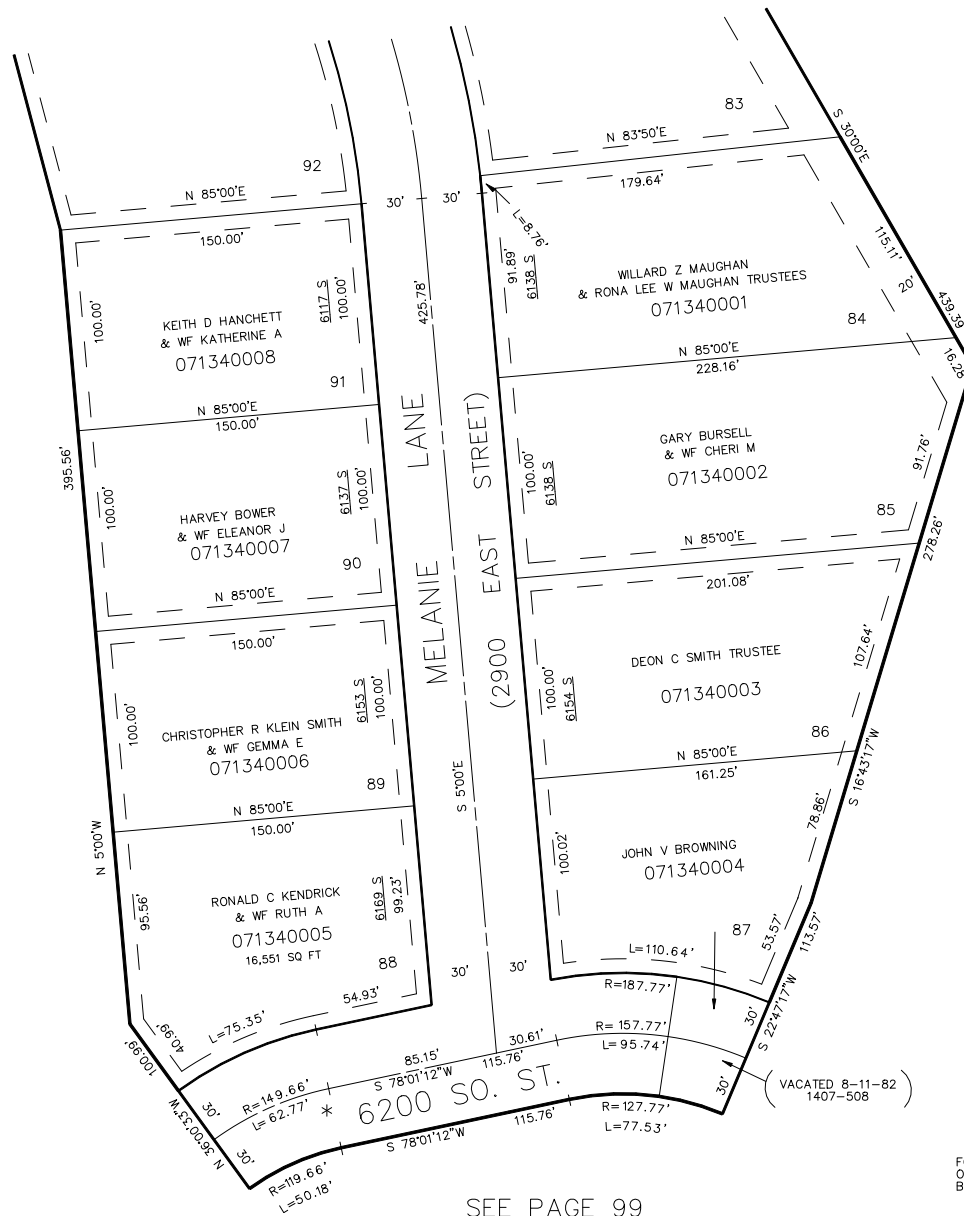
LOTS 84-91

IN WEBER COUNTY

TAXING UNIT: 159

SCALE 1"=50'

SEE PAGE 133



SEE PAGE 99

SEE PAGE 160

\*NAME CHANGED  
 7-7-75  
 ORD.#8-75  
 (1091-318)

7' UTILITY & DRAINAGE EASEMENTS  
 EACH SIDE OF PROPERTY LINE  
 AS INDICATED BY DASHED LINES,  
 EXCEPT AS OTHERWISE SHOWN.

FOR COMPLETE ENG. DATA SEE  
 ORIGINAL DEDICATION PLAT IN  
 BOOK 16, PAGE 72, OF RECORDS.

SEE PAGE 99